

## Rosemary Oil

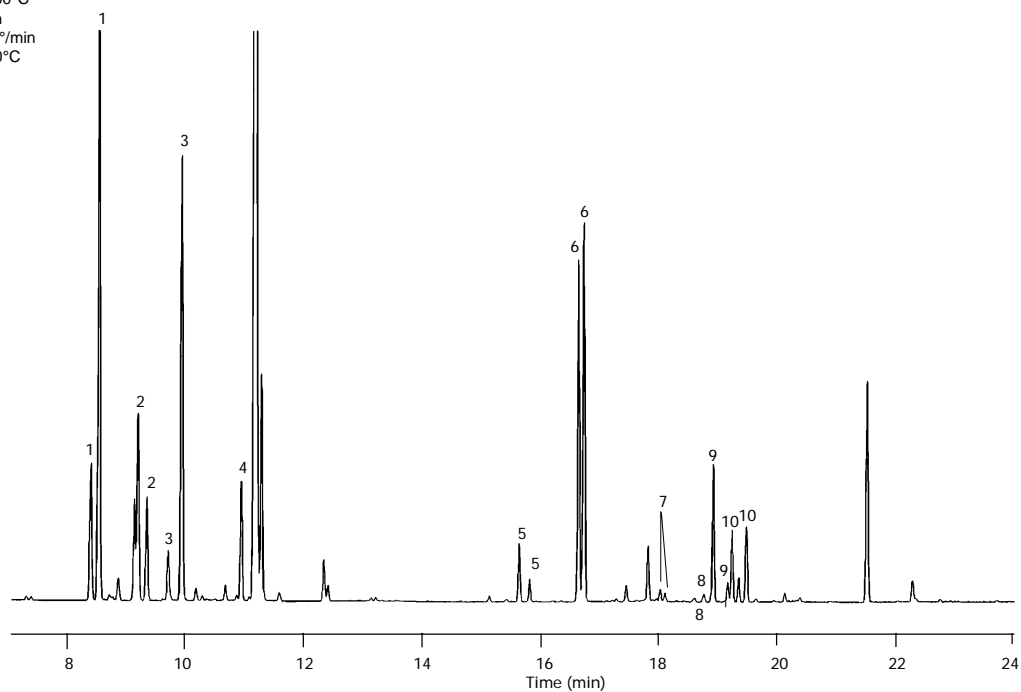
Column: CycloSil-B  
30 m x 0.25 mm I.D., 0.25  $\mu$ m

J&W P/N: 122-6632  
Carrier: Hydrogen at 40 cm/sec,  
measured at 60°C

Oven: 55°C for 1 min  
55-180°C at 5°/min

Injector: Split 50:1, 250°C  
Detector: FID, 340°C

1. (+/-)  $\alpha$ -Pinene
2. (+/-) Camphene
3. (+/-)  $\beta$ -Pinene
4. (+/-) Limonene
5. (+/-) Linalool
6. (+/-) Camphor
7. (+/-) Terpinene-4-ol
8. (+/-) Isoborneol
9. (+/-) Borneol
10. (+/-)  $\alpha$ -Terpineol



C509