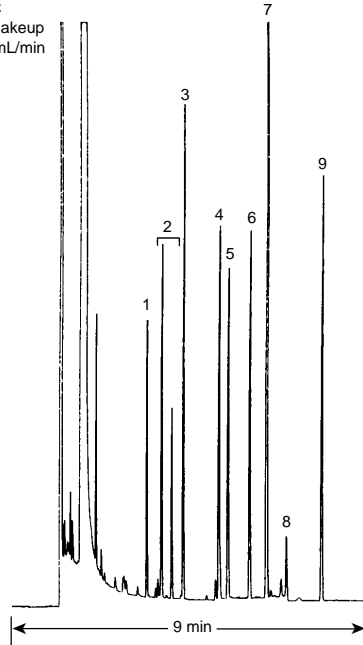


## TMS Sugars

**Column:** DB-1701  
30 m x 0.25 mm I.D., 0.25 µm  
**J&W P/N:** 122-0732  
**Carrier:** Hydrogen at 40 cm/sec  
**Oven:** 180°C for 2 min  
180-200°C at 5°/min  
**Injector:** Split 1:50, 225°C  
**Detector:** FID, 250°C  
Nitrogen makeup  
gas at 30 mL/min

1. D-Arabinose
2. D-Ribose anomers
3. D-Zylose
4. D-Mannose
5. D-Fructose
6. α-D-Galactose
7. α-D-Glucose
8. D-Fructose (anomer)
9. β-D-Glucose



C086