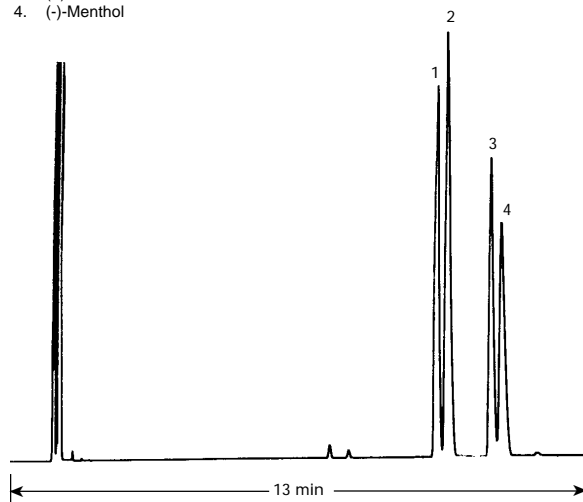


## Menthol

**Column:** Cyclodex-B  
30 m x 0.25 mm I.D., 0.25  $\mu$ m  
**J&W P/N:** 112-2532  
**Carrier:** Hydrogen at 55 cm/sec  
**Oven:** 105°C isothermal  
**Injector:** Split 1:100, 250°C  
1  $\mu$ L of 1  $\mu$ g/ $\mu$ L each in chloroform  
**Detector:** FID, 300°C  
Nitrogen makeup gas at 30 mL/min

1. (+)-Neomenthol
2. (-)-Neomenthol
3. (+)-Menthol
4. (-)-Menthol



C082