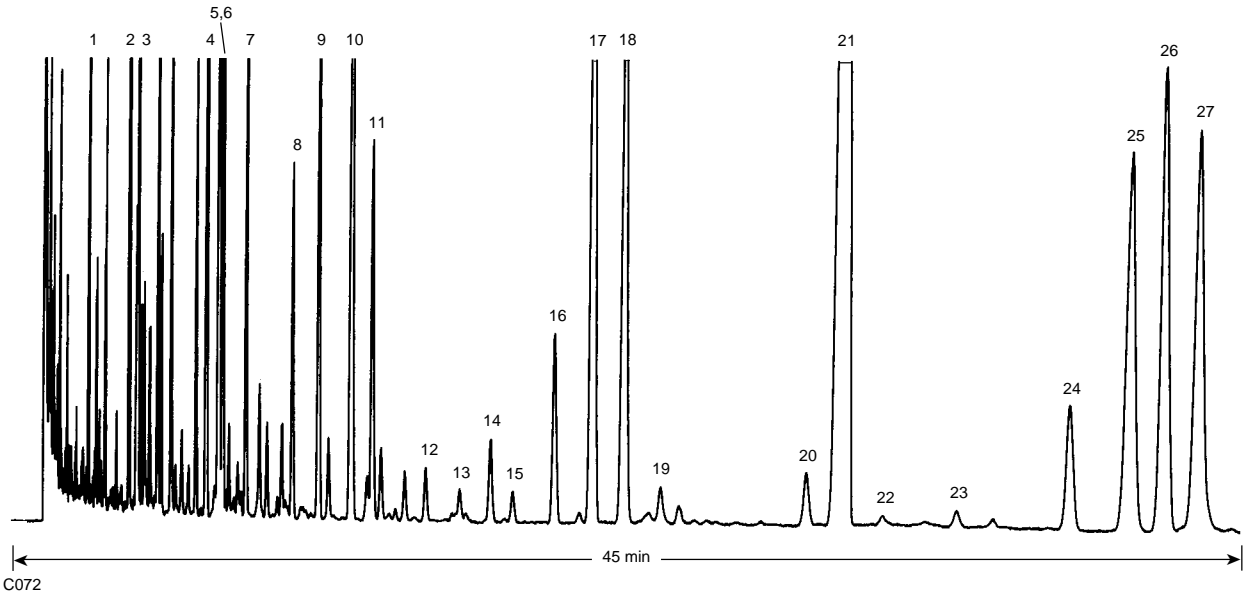


# Menhaden Fish Oil (FAME)

## Column: DB-WAX

30 m x 0.25 mm I.D., 0.25  $\mu$ m  
J&W P/N: 122-7032  
Carrier: Helium at 35 cm/sec, measured at 200°C  
Oven: 200°C  
Injector: Split 1:100, 250°C  
1  $\mu$ L of 50  $\mu$ g/ $\mu$ L each in hexane  
Detector: FID, 300°C  
Nitrogen makeup gas at 30 mL/min

- |             |              |                    |                    |
|-------------|--------------|--------------------|--------------------|
| 1. C14:0    | 8. C18:3n-3  | 15. C20:3n-3       | 22. C22:4n-6       |
| 2. C16:0    | 9. C18:4n-3  | 16. C20:4n-3       | 23. C22:5n-6       |
| 3. C16:1n-7 | 10. C20:0    | 17. C20:5n-3 (EPA) | 24. C22:5n-3       |
| 4. C18:0    | 11. C20:1n-9 | 18. C22:0          | 25. C24:0          |
| 5. C18:1n-9 | 12. C20:2n-6 | 19. C22:1          | 26. C22:6n-3 (DHA) |
| 6. C18:1n-7 | 13. C20:3n-6 | 20. C21:5n-3       | 27. C24:1          |
| 7. C18:2n-6 | 14. C20:4n-6 | 21. C23:0 (IS)     |                    |



C072