

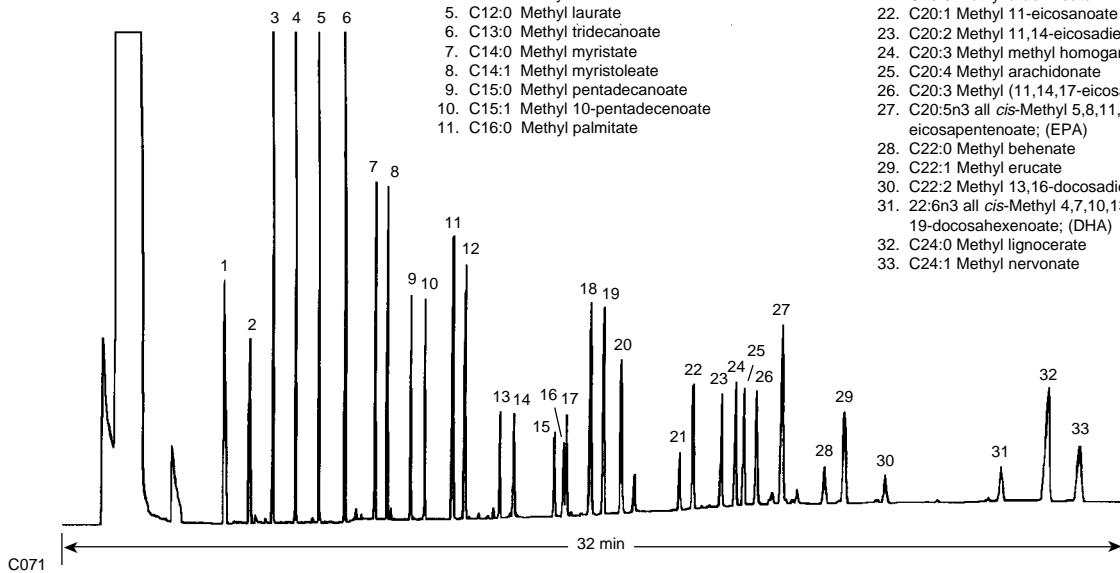
Fatty Acid Methyl Esters (FAME)

Column: DB-225
 30 m x 0.25 mm I.D., 0.25 µm
J&W P/N: 122-2232
Carrier: Helium at 40 cm/sec,
 measured at 70°C
 70°C for 1 min
Oven: 70-180°C at 20°/min
 180-220°C at 3°/min
 220°C for 15 min

Injector: Splitless, 250°C
 45 sec purge activation time
Detector: FID, 300°C
 Nitrogen makeup gas
 at 30 mL/min

1. C8:0 Methyl octanoate
2. C9:0 Methyl nonanoate
3. C10:0 Methyl decanoate
4. C11:0 Methylundecanoate
5. C12:0 Methyl laurate
6. C13:0 Methyl tridecanoate
7. C14:0 Methyl myristate
8. C14:1 Methyl myristoleate
9. C15:0 Methyl pentadecanoate
10. C15:1 Methyl 10-pentadecenoate
11. C16:0 Methyl palmitate

12. C16:1 Methyl palmitoleate
13. C17:0 Methyl heptadecanoate
14. C17:1 Methyl 10-heptadecenoate
15. C18:0 Methyl stearate
16. C18:1 *trans*-Methyl elaidate
17. C18:1 *cis*-Methyl oleate
18. C18:2 Methyl linoleate
19. C18:3 Methyl gamma linolenate
20. C18:3 Methyl linolenate
21. C20:0 Methyl arachinoate
22. C20:1 Methyl 11-eicosanoate
23. C20:2 Methyl 11,14-eicosadienoate
24. C20:3 Methyl methyl homogamma linolenate
25. C20:4 Methyl arachidonate
26. C20:3 Methyl (11,14,17-eicosatrienoate
27. C20:5n3 all *cis*-Methyl 5,8,11,14,17-eicosapentenoate; (EPA)
28. C22:0 Methyl behenate
29. C22:1 Methyl erucate
30. C22:2 Methyl 13,16-docosadienoate
31. 22:6n3 all *cis*-Methyl 4,7,10,13,16,19-docosahexenoate; (DHA)
32. C24:0 Methyl lignocerate
33. C24:1 Methyl nervonate



C071