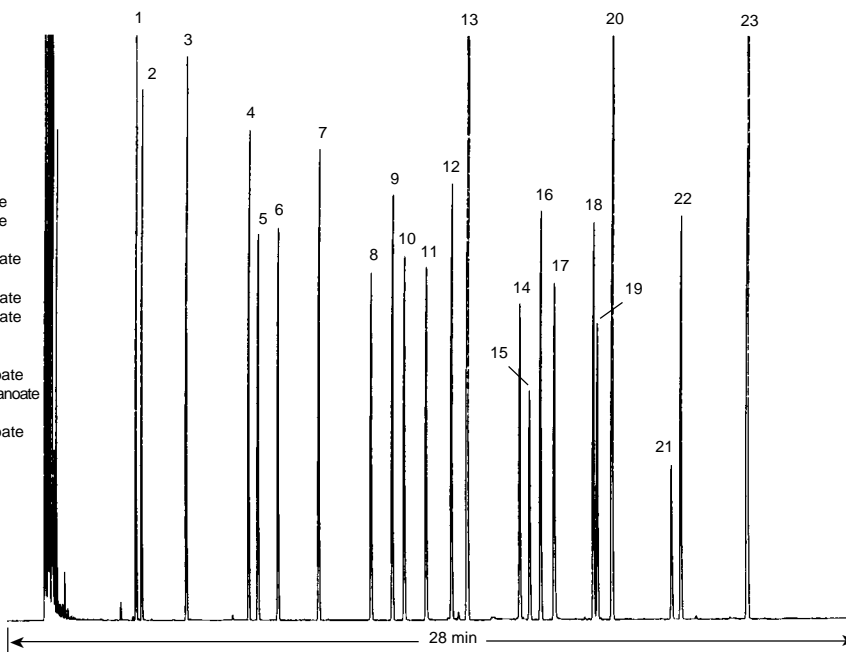


# Bacterial Fatty Acid Methyl Esters

**Column:** DB-5  
30 m x 0.25 mm I.D., 0.25 µm  
**J&W P/N:** 122-5032  
**Carrier:** Hydrogen at 42 cm/sec  
**Oven:** 150°C for 4 min  
150-250°C at 4°/min  
**Injector:** Split 1:100  
**Detector:** FID  
Nitrogen makeup gas at  
30 mL/min

- |                     |   |
|---------------------|---|
| 1. C11:0            | Methylundecanoate                               |
| 2. 2-OH C10:0       | Methyl 2-hydroxydecanoate                       |
| 3. C12:0            | Methyl laurate                                  |
| 4. C13:0            | Methyl tridecanoate                             |
| 5. 2-OH C12:0       | Methyl 2-hydroxydodecanoate                     |
| 6. 3-OH C12:0       | Methyl 3-hydroxydodecanoate                     |
| 7. C14:0            | Methyl myristate                                |
| 8. 12-Me C14:0      | Methyl 12-methyltetradecanoate                  |
| 9. C15:0            | Methyl pentadecanoate                           |
| 10. 2-OH C14:0      | Methyl 2-hydroxytetradecanoate                  |
| 11. 3-OH C14:0      | Methyl 3-hydroxytetradecanoate                  |
| 12. C16:1           | Methyl palmitoleate                             |
| 13. C16:0           | Methyl palmitate                                |
| 14. 14-Me C16:0     | Methyl 14-methylhexadecanoate                   |
| 15. 9,10-diMe C16:0 | Methyl <i>cis</i> -9,10-methyl hexadecanoate    |
| 16. C17:0           | Methyl heptadecanoate                           |
| 17. 2-OH C16:0      | Methyl 2-hydroxyhexadecanoate                   |
| 18. C18:1           | Methyl oleate                                   |
| 19. C18:1           | Methyl elaidate                                 |
| 20. C18:0           | Methyl stearate                                 |
| 21. 9,10-diMe C18:0 | Methyl <i>cis</i> -9,10-methylene octadecanoate |
| 22. C19:0           | Methyl nonadecanoate                            |
| 23. C20:0           | Methyl arachidate                               |



C068