

White Wine

Column: DB-WAX
30 m x 0.25 mm I.D., 0.25 μ m

J&W P/N: 122-7032

Carrier: Hydrogen at 48 cm/sec

Oven: 35°C for 5 min

35-230°C at 6°/min

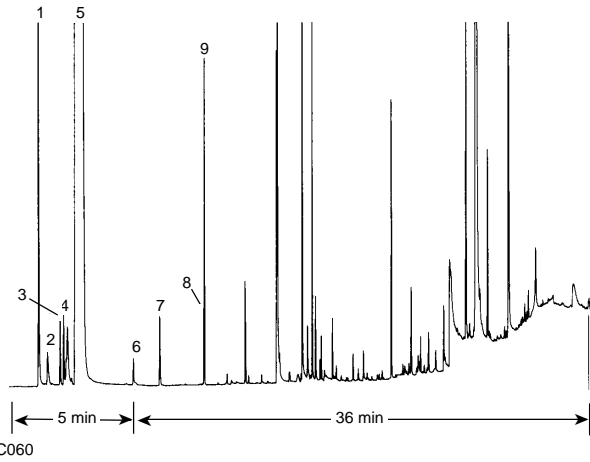
230°C for 5 min

Injector: Split 1:20, 1.5 μ L

Detector: FID

Nitrogen makeup gas at
30 mL/min

1. Acetaldehyde
2. Methyl acetate
3. Ethyl acetate
4. Methanol
5. Ethanol
6. 1-Propanol
7. Isobutanol
8. 2-Methyl-1-butanol
9. 3-Methyl-1-butanol



C060