

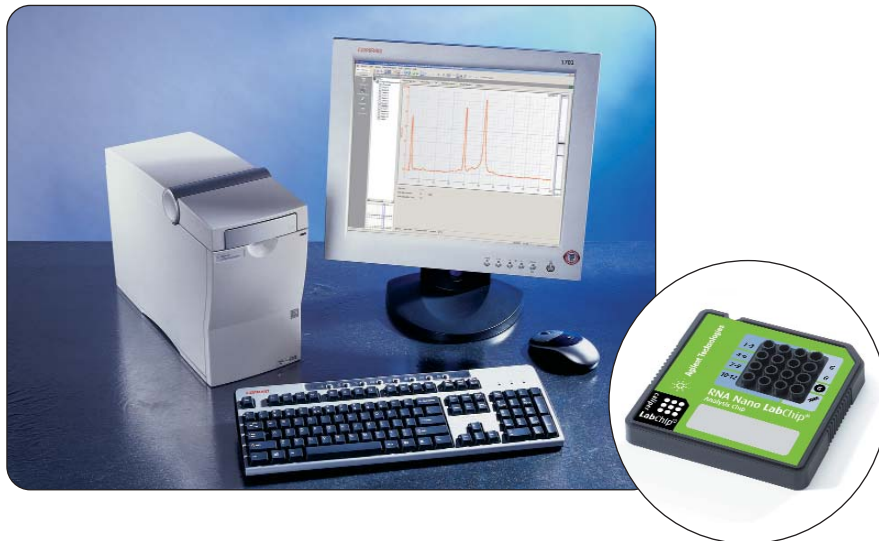
## New RNA Series II kits

### Fast quality control of RNA with minimal sample consumption

Do you need a standardized method to check the quality of your total RNA preparation after isolation? Are you confident about the quality of your mRNA or Cy5 labeled RNA? Agilent offers RNA assays that allow characterization of total or mRNA samples and estimation of their concentrations within minutes, with only a few nano- or picograms of sample.

#### Advantages of the Lab-on-a-Chip approach

- **RNA Integrity number** – standardization of RNA quality control
- **Minimal sample consumption** – use as little as 50 pg of total RNA for analysis, saving most of your valuable preps.
- **Faster results** – complete automated analysis of all samples in about 30 minutes
- **Improved assay accuracy and precision** – pre-packaged reagents and standardized assay protocols yield highly accurate and reproducible data
- **Quick and easy sample comparison** – automated sample alignment, one-click overlay, scaling and zooming features
- **Conveniently archived and stored digital data** – easily share data with others and export it for publications or presentations
- **Alternative data display options** – results shown in gel-like image, electropherogram, and tabular formats
- **Easy-to-use** – simply load the chip, press "start" and the Agilent 2100 bioanalyzer does the rest.
- **RNase free** – uses RNase free reagents and chips to avoid sample degradation during analysis
- **Clean** – minimal exposure to hazardous materials, such as ethidium bromide



	Agilent RNA 6000 Nano kit		Agilent RNA 6000 Pico kit	
<b>Analytical specifications</b>	<b>Total RNA</b>	<b>mRNA</b>	<b>Total RNA</b>	<b>mRNA</b>
Quantitative range	25-500 ng/μL	25-250 ng/μL	-	-
Qualitative range	5-500 ng/μL	25-250 ng/μL	50-5000 pg/μL (in water)	250-5000 pg/μL (in water)
Reprod. of quantitation	10 % CV	10 % CV	20 % CV	20 % CV
Quantitation accuracy*	20 % CV	20 % CV	30 % CV	30 % CV
Buffer compatibility	100 mM Tris or 125 mM NaCl or 15 mM MgCl <sub>2</sub>	100 mM Tris or 125 mM NaCl or 15 mM MgCl <sub>2</sub>	50 mM Tris or NaCl	50 mM Tris or NaCl
<b>Physical specifications</b>				
Analysis run time	30 minutes	30 minutes	30 minutes	30 minutes
Number of samples	12 samples/chip	12 samples/chip	11 samples/chip	11 samples/chip
Sample volume	1 μL	1 μL	1 μL	1 μL
Kit stability:	4 months if stored appropriately.			

\* RNA ladder as sample.

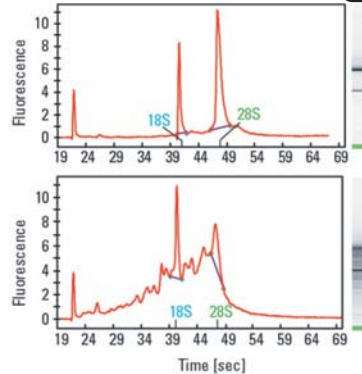


# Solutions for a wide range of applications

## RNA 6000 Pico Assay

### Quality of RNA

- Identify degradation of total RNA with RIN
- Identify degradation of mRNA
- Unparalleled sensitivity in the picogram range and minimal sample consumption

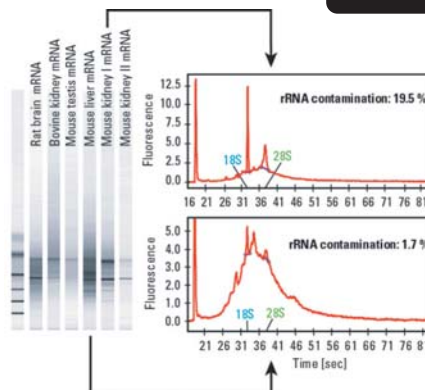


RNase degradation of RNA samples is a common reason for failed experiments. The Agilent 2100 bioanalyzer provides RNA quality control results in both gel-like image as well as electrophoretic data making it easy to detect even small degradation effects. In addition an RNA Integrity Number (RIN) is provided for each total RNA sample allowing standardization.

## RNA 6000 Nano Assay

### Purity of mRNA samples

- Detect and visualize ribosomal RNA contamination in mRNA samples
- Determine the percentage of ribosomal contamination

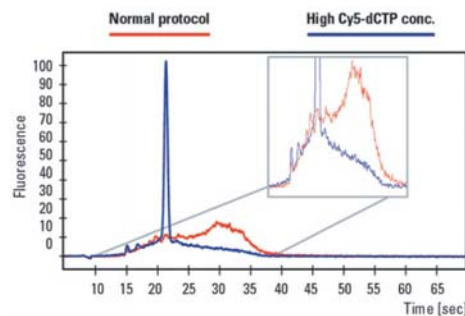


Many applications, such as cDNA synthesis for library construction or RT-PCR profit from highly enriched mRNA. The RNA kits allow the visualization of small impurities of ribosomal RNA in mRNA samples. The percentage calculation of ribosomal contamination and a good estimate of RNA concentration are also shown. All of this can be achieved with minimal amounts of sample.

## RNA 6000 Nano Assay

### Optimization of Cy5 labeling reactions

- Compare different labeling protocols
- Estimation of size distribution for Cy5 labeled samples



In the context of microarray technology, RNA samples are labeled before hybridization onto the array. The labeling efficiency is critical to the quality of the data obtained from the hybridization experiment. The overlay function of the 2100 expert software provides a comparison of different labeling protocols for Cy5 labeled samples allowing you to choose the one that gives optimal yield.

Kits for the Agilent 2100 bioanalyzer are available for the analysis of DNA, RNA, proteins and cells.



To find out more call:

**US/Canada**  
Phone: Toll-free 1-800 227 9770  
Email: bioanalyzer\_americas@agilent.com

**Europe**  
Email: bioanalyzer\_europe@agilent.com

**Japan**  
Phone: 0422 56 9393  
Email: lab\_chip@agilent.com

**Other Asia Pacific**  
Phone: +81 422 56 9392  
Email: bioanalyzer\_ap@agilent.com

Copyright © 2006 Agilent Technologies

All Rights Reserved. Reproduction, adaptation or translation without prior written permission is prohibited, except as allowed under the copyright laws.

Published March 1, 2006  
Publication Number: 5989-4882EN