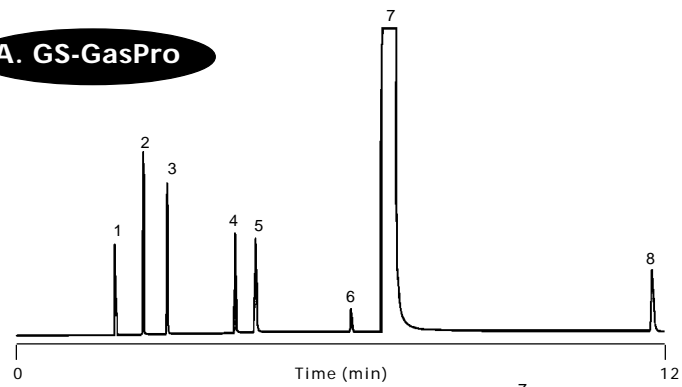


Column: GS-GasPro
30 m x 0.32 mm I.D.
J&W P/N: 113-4332
Carrier: Nitrogen at 29 cm/sec
Oven: 40°C for 2 min
40 - 200°C at 10°/min
Injector: 200 µL
Detector: FID

1. Methane
2. Ethane
3. Ethylene
4. Acetylene
5. Propane
6. Cyclopropane
7. Propylene
8. *cis*-2-Butene

A. GS-GasPro



Column: Al₂O₃/KCl
50 m x 0.53 mm I.D.
Carrier: Nitrogen at 29 cm/sec
Oven: 40°C for 3 min
40 - 200°C at 10°/min
Injector: 25 µL
Detector: FID

B. Al₂O₃/KCl

